

Modern 51-Collection Wall Mount Vanity

Model: 834446

Collection: Blu Bathworks

Origin: Italy

Description: Wall Mount Vanity in HST Bianco 47-1/4"W x 19"H x 20-1/4"D w/ Integrated Countertop Basin in White Gloss

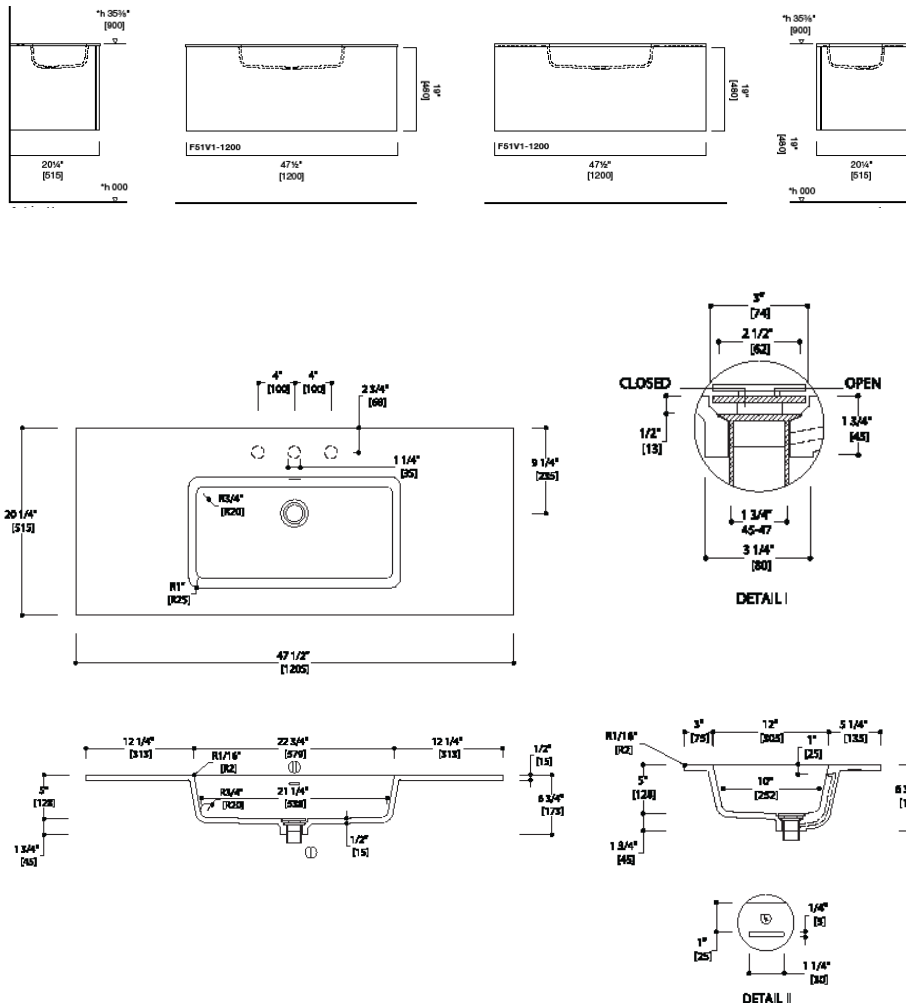


GENERAL FEATURES & SPECIFICATIONS

- Wall Mount Vanity
- Includes: Deep Drawer & Slim Drawer Insert
- 47-1/4"W x 19"H x 20-1/4"D
- Slim Inner Drawer Designed for Plumbing Clearance
- Hettich Push/Pull Drawer Opening System
- Material: Hard Surface Technology (HST)
- Finish: Bianco
- Integrated Basin & Countertop with Integral Slot Overflow
- Matching Waste Cover
- Knockouts May be Drilled on-site for Deck Mount Faucets
- Non-Porous, Stain Resistant
- 47-1/2"W x 6-3/4"H x 20-1/4"D (1205 x 173 x 515mm)
- Apron Height: 1/2" (15mm)
- Drain Hole: 1-3/4" (45mm)
- Material: Blu Stone
- Finish: Gloss White

Codes/Standards:

ADA, ASME A112.19.2, IAPMO/cUPC, ICC/ANSI A117.1, CSA B 45, Fixture Dimensions and Hydraulic Performance meet or exceed ANSI/ASME standard A112.19.2, A112.19.9M, and CAN/CSA B45 requirements



We cannot guarantee the accuracy of this information. Dimensions are nominal – for guidance only and are not to be used for pre-installation.

For further information call 312.832.9000 or visit us at hydrologychicago.com