

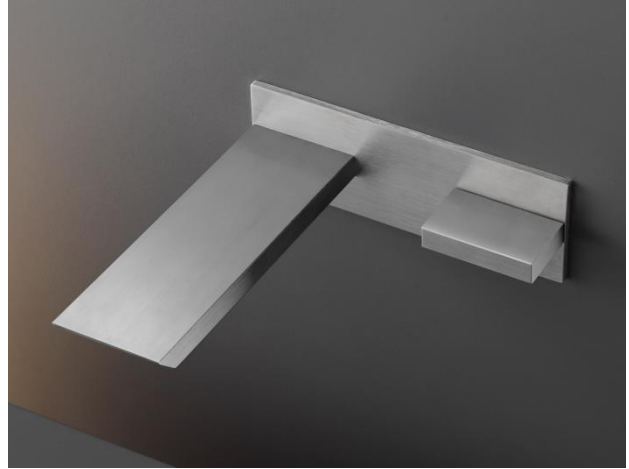
Modern Bar Wall Mount Faucet

Style Number: 770560

Collection: Cea Design

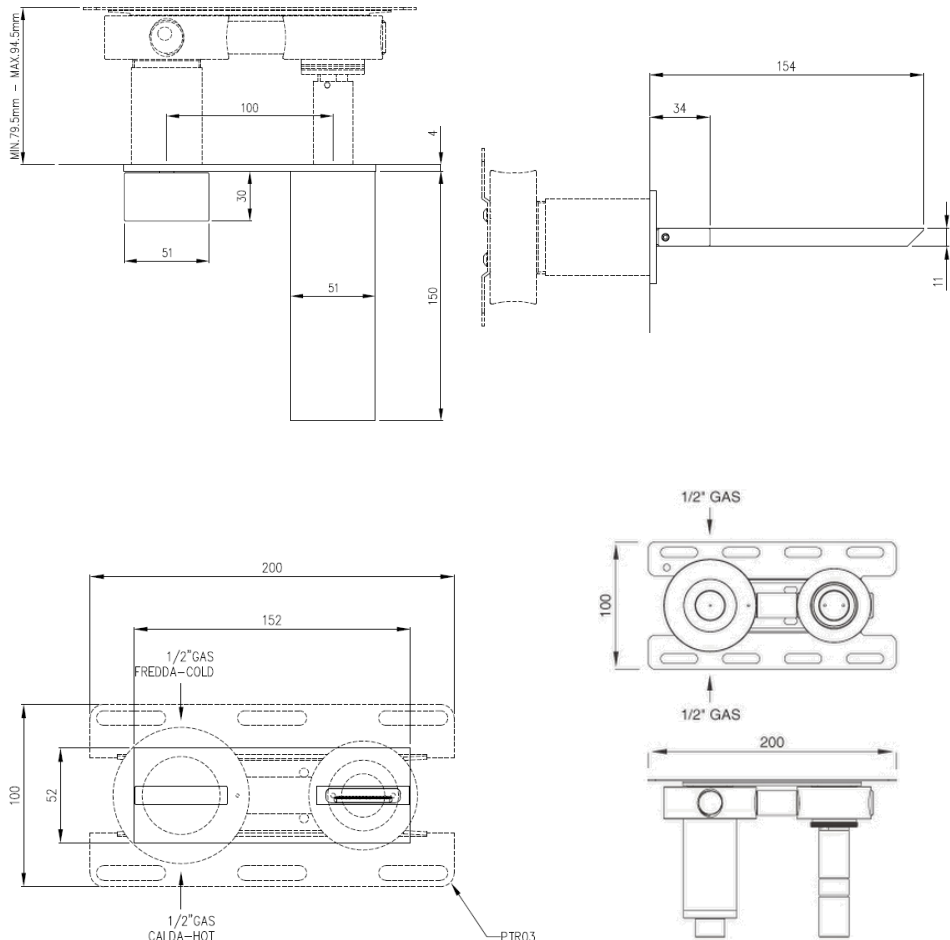
Origin: Italy

Description: Bar Wall Mount
Horizontal Hydroprogressive Mixer w/
Spout & Built-in Part in Satin
Stainless Steel 6.10" (155mm)
Projection



GENERAL FEATURES & SPECIFICATIONS

- Wall Mounted
- Horizontal
- Hydroprogressive
- With Spout
- 6.10" (155mm) Projection
- 5.90" (150mm) Length
- Max. 158° F
- Water Saving 1.32gpm
- Built-in Part
- 12" Gas
- **Material: Stainless Steel**
- **Finishes: Satin, Polished, Polished Copper, Satin Copper, Polished Bronze, Satin Bronze, Polished Gold, Satin Gold, Polished Black Diamond, Satin Black Diamond**



Does Not Meet Any US Code Approvals, Building Or Plumbing Codes

We cannot guarantee the accuracy of this information. Dimensions are nominal – for guidance only and are not to be used for pre-installation.

For further information call 312.832.9000 or visit us at hydrologychicago.com