

Modern Echo Countertop Basin

Model: 840260

Collection: Claybrook

Origin: UK

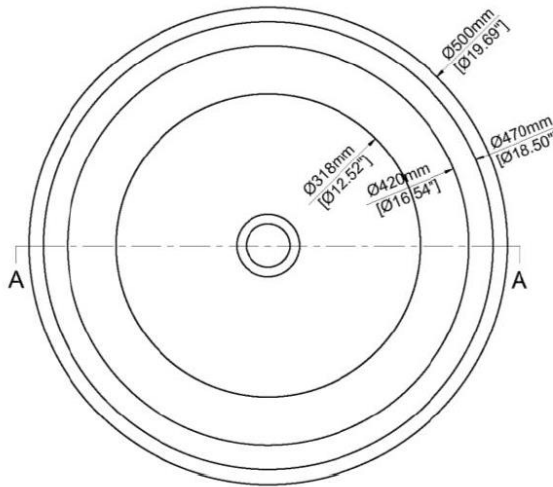
**Description: Echo Countertop Basin
in Carved Marble Lightning Grey
19.69”L x 19.69”W x 7.28”H**



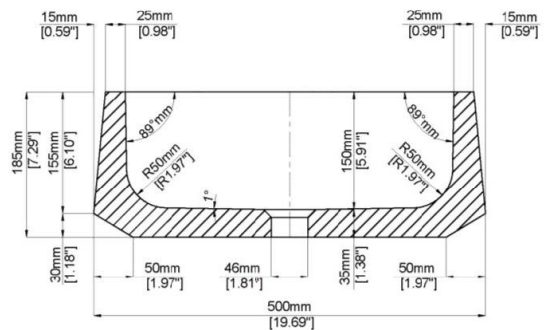
GENERAL FEATURES & SPECIFICATIONS

- Countertop Basin
- Marble without Overflow
- 19.69”L x 19.69”W x 7.28”H
- Weight: 119lbs/ 54kg
- Weight with Water: 163lbs/ 74kg
- Capacity: 5.28 US gal/ 20L
- Pop Up Waste Ordered Separately

TOP VIEW



SECTION A-A



We cannot guarantee the accuracy of this information. Dimensions are nominal – for guidance only and are not to be used for pre-installation.

For further information call 312.832.9000 or visit us at hydrologychicago.com